


















**Worklist: 2800**

<u>LAB_CASE</u>	<u>ITEM</u>	<u>TASK_ID</u>	<u>DESCRIPTION</u>	
C2018-2292	4	132448	AM 3 Urine Carboxy-THC	
M2018-5313	3	132449	AM 3 Urine Carboxy-THC	
M2018-5314	4	132450	AM 3 Urine Carboxy-THC	
M2018-5389	2	132451	AM 3 Urine Carboxy-THC	
P2018-3040	1	132452	AM 3 Urine Carboxy-THC	
P2018-3079	1	132453	AM 3 Urine Carboxy-THC	
P2018-3080	1	132454	AM 3 Urine Carboxy-THC	
P2018-3122	1	132455	AM 3 Urine Carboxy-THC	
P2018-3126	1	132456	AM 3 Urine Carboxy-THC	
P2018-3206	1	132457	AM 3 Urine Carboxy-THC	
P2018-3233	1	132458	AM 3 Urine Carboxy-THC	
P2018-3234	1	132459	AM 3 Urine Carboxy-THC	
P2018-3236	1	132460	AM 3 Urine Carboxy-THC	
P2018-3237	1	132461	AM 3 Urine Carboxy-THC	
P2018-3262	1	132462	AM 3 Urine Carboxy-THC	
P2018-3263	1	132463	AM 3 Urine Carboxy-THC	
P2018-3264	1	132464	AM 3 Urine Carboxy-THC	

Data Path : I:\Instrument Data\Pocatello\Major Mass Spec\CDS\2018\am 3 worklist 2800\  
Data File : MJ-THC-PC1.D  
Acq On : 27 Nov 2018 08:50  
Operator : ISP\datastor  
Sample : Spiked Positive c-THC Control  
Misc : c-THC lot # 0497429 in Negative Lot # POC062718; Worklist 2800  
ALS Vial : 52 Sample Multiplier: 1

Integration Parameters: events.e  
Integrator: ChemStation

Method : C:\gcms\1\methods\TOX.M  
Title :

Signal : EIC Ion 371.00 (370.70 to 371.70): MJ-THC-PC1.D\data.ms

peak #	R.T. min	first scan	max scan	last scan	PK TY	peak height	corr. area	corr. % max.	% of total
1	6.585	73	104	106	BV 2	132	1146	1.14%	0.999%
2	6.639	106	123	150	VV	5221	100469	100.00%	87.600%
3	6.881	185	207	220	VV	124	3980	3.96%	3.470%
4	7.075	263	275	294	VV	231	5743	5.72%	5.007%
5	7.292	325	350	359	PBA	141	3352	3.34%	2.923%

Sum of corrected areas: 114690  
Signal : EIC Ion 473.00 (472.70 to 473.70): MJ-THC-PC1.D\data.ms

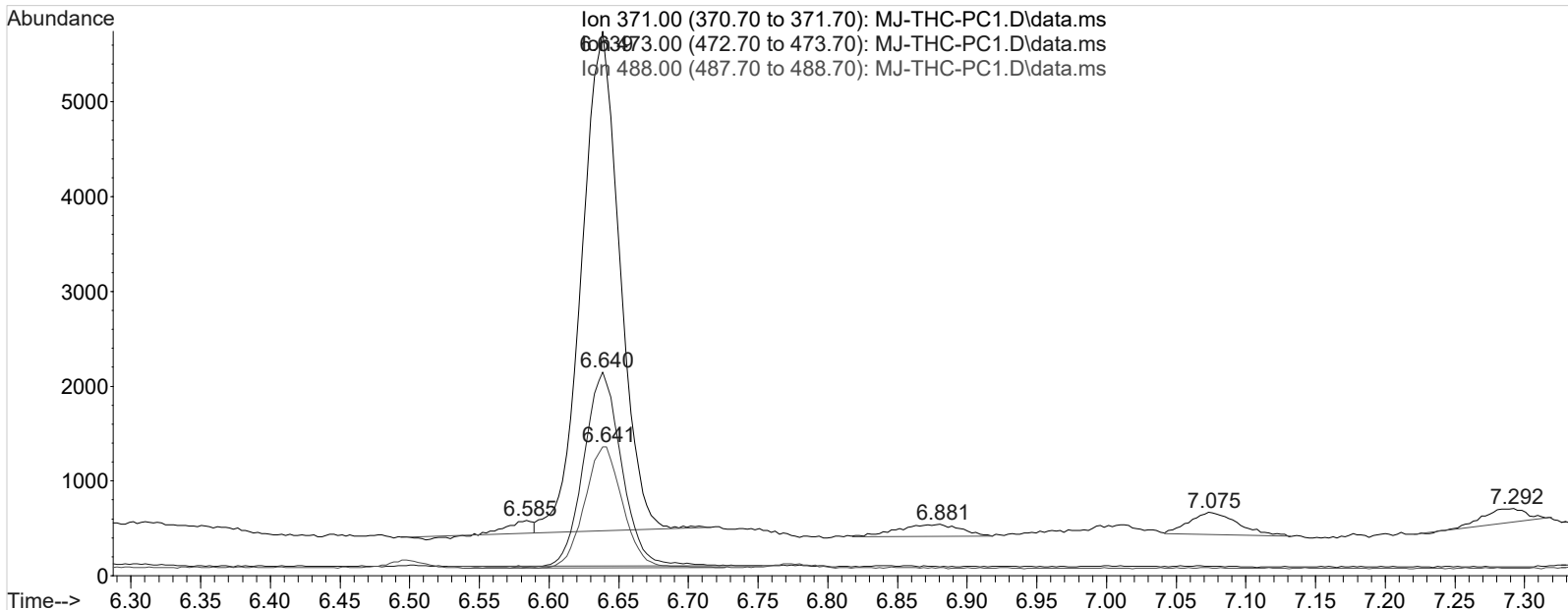
peak #	R.T. min	first scan	max scan	last scan	PK TY	peak height	corr. area	corr. % max.	% of total
1	6.640	84	123	163	BB	2029	38712	100.00%	100.000%

Sum of corrected areas: 38712  
Signal : EIC Ion 488.00 (487.70 to 488.70): MJ-THC-PC1.D\data.ms

peak #	R.T. min	first scan	max scan	last scan	PK TY	peak height	corr. area	corr. % max.	% of total
1	6.641	89	124	154	PB	1278	24200	100.00%	100.000%

Sum of corrected areas: 24200

TOX.M Fri Nov 30 13:50:24 2018



Data Path : I:\Instrument Data\Pocatello\Major Mass Spec\CDS\2018\am 3 worklist 2800\  
Data File : MJ-THC-PC2.D  
Acq On : 28 Nov 2018 16:30  
Operator : ISP\datastor  
Sample : Spiked Positive c-THC Control  
Misc : c-THC lot # 0497429 in Negative Lot # POC062718; Worklist 2800  
ALS Vial : 52 Sample Multiplier: 1

Integration Parameters: events.e  
Integrator: ChemStation

Method : C:\gcms\1\methods\TOX.M  
Title :

Signal : EIC Ion 371.00 (370.70 to 371.70): MJ-THC-PC2.D\data.ms

peak #	R.T. min	first scan	max scan	last scan	PK TY	peak height	corr. area	corr. % max.	% of total
1	6.580	86	103	105	PV	223	3535	1.85%	1.574%
2	6.633	105	121	139	VV 2	10074	190976	100.00%	85.064%
3	6.866	178	202	220	BV	207	6719	3.52%	2.993%
4	7.003	234	250	261	VV	190	5977	3.13%	2.662%
5	7.072	261	273	288	VV	363	9550	5.00%	4.254%
6	7.281	324	346	359	PBA	291	7753	4.06%	3.453%

Sum of corrected areas: 224509

Signal : EIC Ion 473.00 (472.70 to 473.70): MJ-THC-PC2.D\data.ms

peak #	R.T. min	first scan	max scan	last scan	PK TY	peak height	corr. area	corr. % max.	% of total
1	6.634	86	121	159	BV 2	3961	74310	100.00%	100.000%

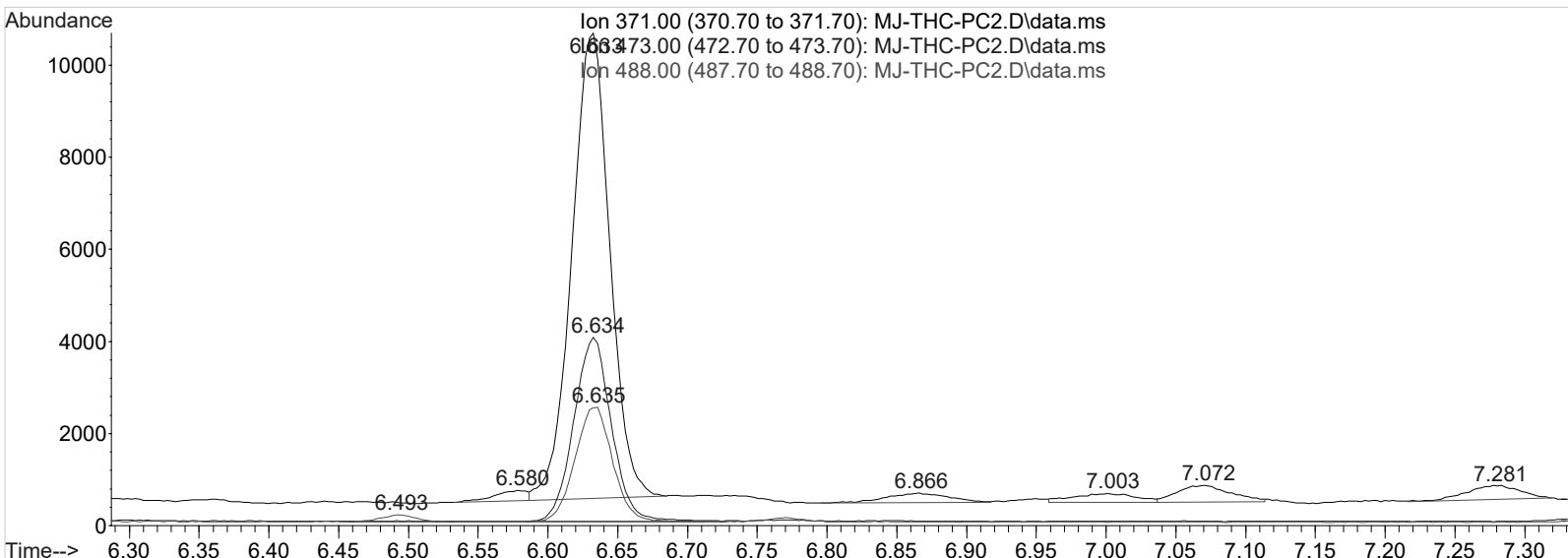
Sum of corrected areas: 74310

Signal : EIC Ion 488.00 (487.70 to 488.70): MJ-THC-PC2.D\data.ms

peak #	R.T. min	first scan	max scan	last scan	PK TY	peak height	corr. area	corr. % max.	% of total
1	6.493	60	73	86	BB	151	2513	5.37%	5.094%
2	6.635	104	122	154	BV 2	2487	46821	100.00%	94.906%

Sum of corrected areas: 49334

TOX.M Fri Nov 30 13:51:25 2018



Data Path : I:\Instrument Data\Pocatello\Major Mass Spec\CDS\2018\am 3 worklist 2800\  
Data File : MJ-THC-NC.D  
Acq On : 27 Nov 2018 08:39  
Operator : ISP\datastor  
Sample : Negative Control  
Misc : Lot # POC062718; AM #3 Worklist 2800  
ALS Vial : 51 Sample Multiplier: 1

Integration Parameters: events.e  
Integrator: ChemStation

Method : C:\gcms\1\methods\TOX.M  
Title :

Signal : EIC Ion 371.00 (370.70 to 371.70): MJ-THC-NC.D\data.ms

peak #	R.T. min	first scan	max scan	last scan	PK TY	peak height	corr. area	corr. % max.	% of total
1	6.588	80	105	108	PV 2	119	1909	34.61%	15.835%
2	6.611	108	113	129	VV	113	2273	41.21%	18.851%
3	7.083	263	277	304	VV	179	5515	100.00%	45.747%
4	7.300	335	353	359	PBA	101	2359	42.77%	19.567%

Sum of corrected areas: 12055  
Signal : EIC Ion 473.00 (472.70 to 473.70): MJ-THC-NC.D\data.ms

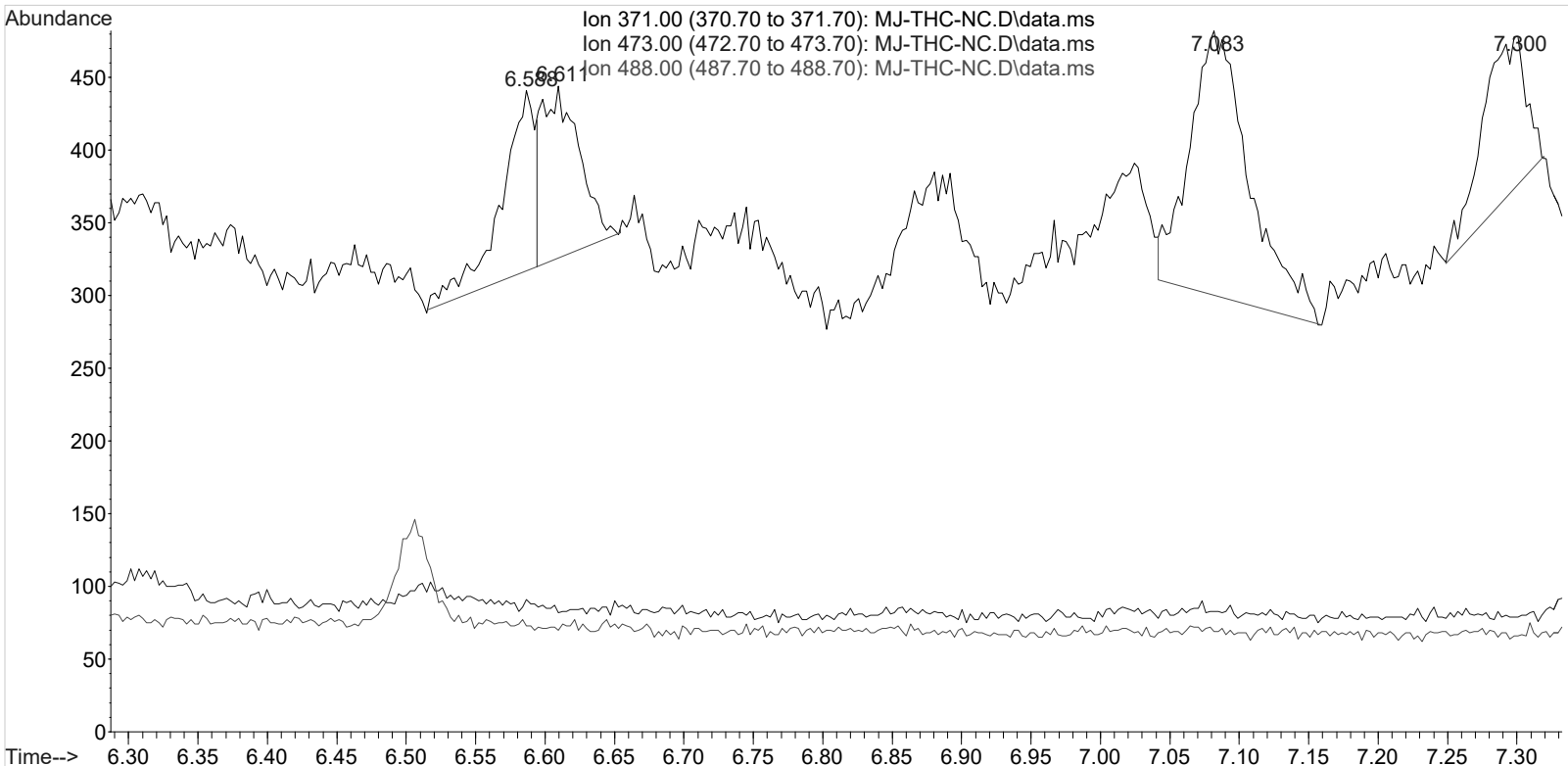
peak #	R.T. min	first scan	max scan	last scan	PK TY	peak height	corr. area	corr. % max.	% of total
--------	----------	------------	----------	-----------	-------	-------------	------------	--------------	------------

No peaks were detected using the method integration parameters!  
Signal : EIC Ion 488.00 (487.70 to 488.70): MJ-THC-NC.D\data.ms

peak #	R.T. min	first scan	max scan	last scan	PK TY	peak height	corr. area	corr. % max.	% of total
--------	----------	------------	----------	-----------	-------	-------------	------------	--------------	------------

No peaks were detected using the method integration parameters!

TOX.M Fri Nov 30 13:51:59 2018



Data Path : I:\Instrument Data\Pocatello\Major Mass Spec\CDS\2018\am 3 worklist 2800\  
 Data File : MJ-THC-C3.D  
 Acq On : 27 Nov 2018 09:12  
 Operator : ISP\datastor  
 Sample : Biorad C3 Control  
 Misc : C3 Lot # ~~68440~~; Worklist 2800 Lot # 68460  
 ALS Vial : 53 Sample Multiplier: 1

Integration Parameters: events.e  
 Integrator: ChemStation

Method : C:\gcms\1\methods\TOX.M  
 Title :

Signal : EIC Ion 371.00 (370.70 to 371.70): MJ-THC-C3.D\data.ms

peak #	R.T. min	first scan	max scan	last scan	PK TY	peak height	corr. area	corr. % max.	% of total
1	6.637	107	123	144	VV	1220	24369	100.00%	95.672%
2	7.082	260	277	284	BV	63	1102	4.52%	4.328%

Sum of corrected areas: 25471  
 Signal : EIC Ion 473.00 (472.70 to 473.70): MJ-THC-C3.D\data.ms

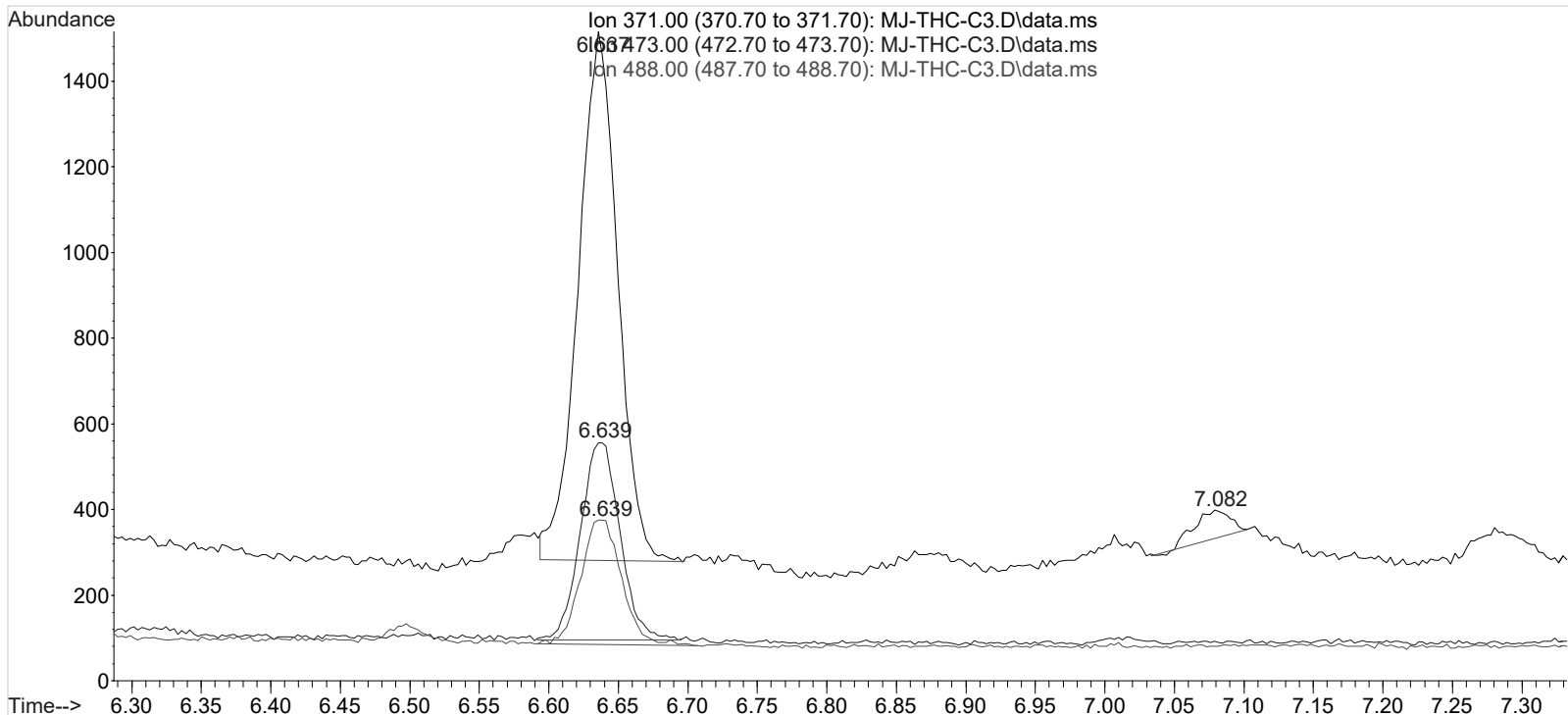
peak #	R.T. min	first scan	max scan	last scan	PK TY	peak height	corr. area	corr. % max.	% of total
1	6.639	107	123	143	PV	460	9058	100.00%	100.000%

Sum of corrected areas: 9058  
 Signal : EIC Ion 488.00 (487.70 to 488.70): MJ-THC-C3.D\data.ms

peak #	R.T. min	first scan	max scan	last scan	PK TY	peak height	corr. area	corr. % max.	% of total
1	6.639	107	123	147	BB	291	5932	100.00%	100.000%

Sum of corrected areas: 5932

TOX.M Fri Nov 30 13:52:24 2018



**Run Date:** 11/27/2018

**Worklist #:** 2800

**Laboratory Case #:** BioRad Lot: 68460

**Case Calculations:**

EIC Ion 371 Corr. Area: 24369

EIC Ion 473 Corr. Area: 9058

EIC Ion 488 Corr. Area: 5932

473:371 Ratio: **0.372**

488:371 Ratio: **0.243**

**Quality Control Calculations:**

	1st Control	2nd Control
EIC Ion 371 Corr. Area:	100469	190976
EIC Ion 473 Corr. Area:	38712	74310
EIC Ion 488 Corr. Area:	24200	46821
Ratio of 473:371:	0.385	0.389
		Average: 0.387
Ratio of 488:371:	0.241	0.245
		Average: 0.243

**Acceptable Retention Time Range:** 6.539 to 6.733

**Approximate Minimum Corrected Area of 371 Ion:** 20094

**Acceptable 473:371 Ratio Range:** 0.310 to 0.465

**Acceptable 488:371 Ratio Range:** 0.194 to 0.292